

Section : Body
Electrical

Ref. No. : BE-1034

Date : Aug., 2001

Page : 1 of 6

Area Application : Others(Hong Kong)

Model Name : HIACE

Model Code : LH172

Subject : SUPPLEMENT FOR REPAIR MANUAL (Combination Meter)

This Service Bulletin is to inform you of the service data for the combination meter on 5L-E engine models.

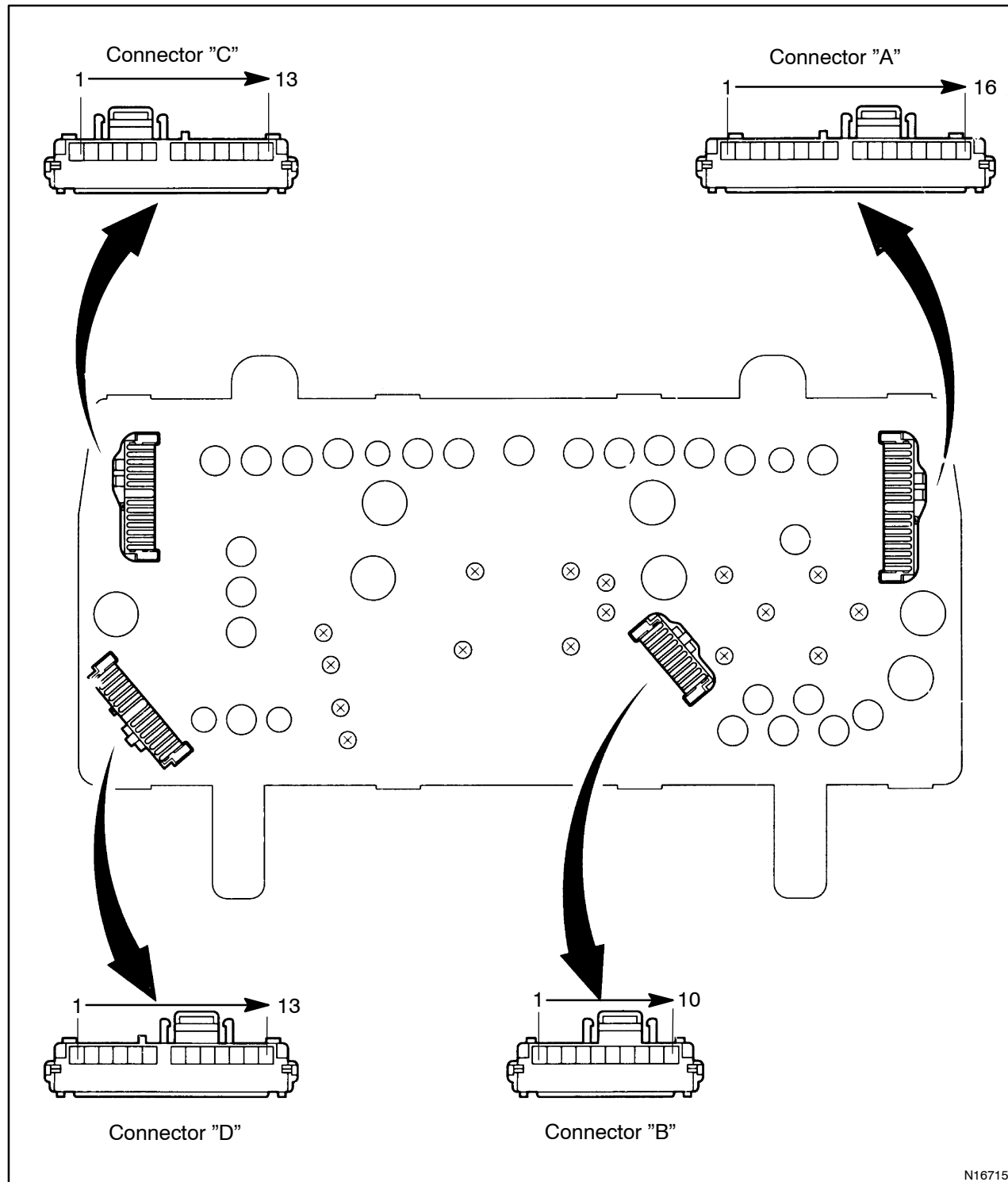
The attached pages are to be used with the following manuals.

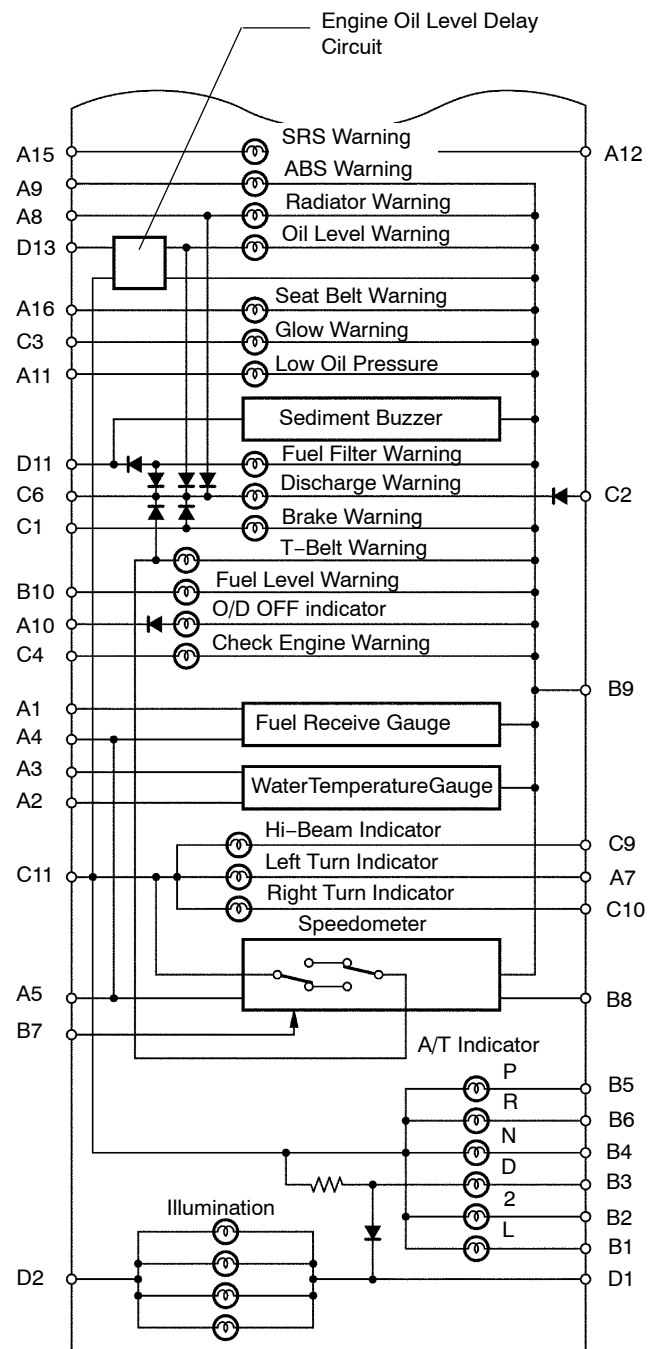
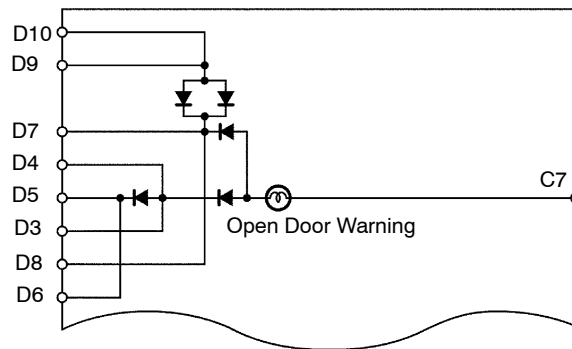
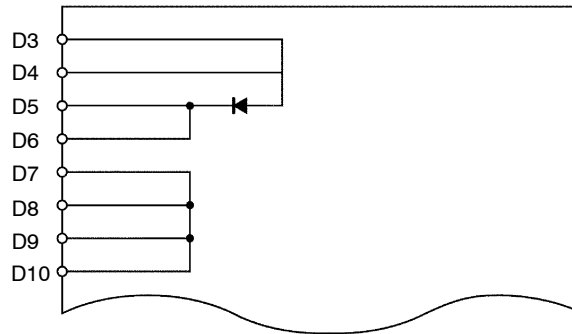
Pub. No.	Publication Name
RM156E	HIACE Chassis & Body Repair Manual
RM471E	HIACE Chassis & Body Repair Manual Supplement
RM670E	HIACE Chassis & Body Repair Manual Supplement
RM709E	HIACE Chassis & Body Repair Manual Supplement

Production Effective :

Frame No.	Production Date
---	From August, 2001

COMBINATION METER CIRCUIT





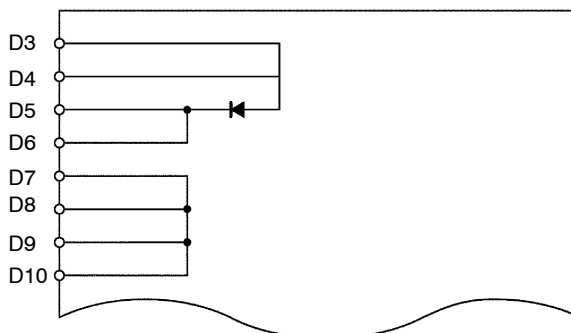
No.	Wiring Connector Side	No.	Wiring Connector Side
A	1 Fuel Sender Gauge	C	1 Brake Fluid Level Warning Switch
	2 Water Temperature Sender Gauge		Parking Brake Switch
	3 Ground (Engine)		Vacuum Switch*7
	4 Ground (Gauge)		2 IGN Fuse
	5 Vehicle Speed Sensor		3 Pre-Heating Timer*1
	7 Turn Signal Switch (Left)		Emission ECU*4
	8 Radiator Fluid Level Sensor		Engine ECU*5
	9 ABS ECU		4 Engine (and ECT) ECU*8
	10 O/D OFF Switch*2		Engine ECU*5
	11 Low Oil Pressure Warning Switch		6 Alternator L Terminal
	12 ECU-B Fuse		7 DOME Fuse
	15 Airbag Sensor Assembly		9 Headlight Dimmer Switch
	16 Seat Belt Buckle Switch		10 Turn Signal Switch (Right)
B	1 Neutral Start Switch (L) *3	D	11 Ground
	2 Neutral Start Switch (2) *3		1 TAIL Fuse
	3 Neutral Start Switch (D) *3		2 Illumination Ground
	4 Neutral Start Switch (N) *3		3 Front Interior Light
	5 Neutral Start Switch (P) *3		4 Door Courtesy Switch
	6 Neutral Start Switch (R) *3		(Passenger Side)
	7 Vehicle Speed Sensor		5 Door Courtesy Switch (Driver Side)
	8 O/D ECU *2		6 Light Reminder Relay
	Emission ECU*4		7 Door Courtesy Switch (Back Door)
	Engine (and ECT) ECU*5, *6		8 Door Courtesy Switch (Slide Door)
	9 Gauge Fuse		9 Room Light Switch
	10 Fuel Sender Gauge		10 Rear Interior Light Switch
			11 Fuel Filter Warning Switch*7
			13 Engine Oil Level Switch

*1: 2L, 3L Engine *2: 3L Engine A/T Vehicle *3: A/T Vehicle *4: 5L Engine *5: 5L-E Engine

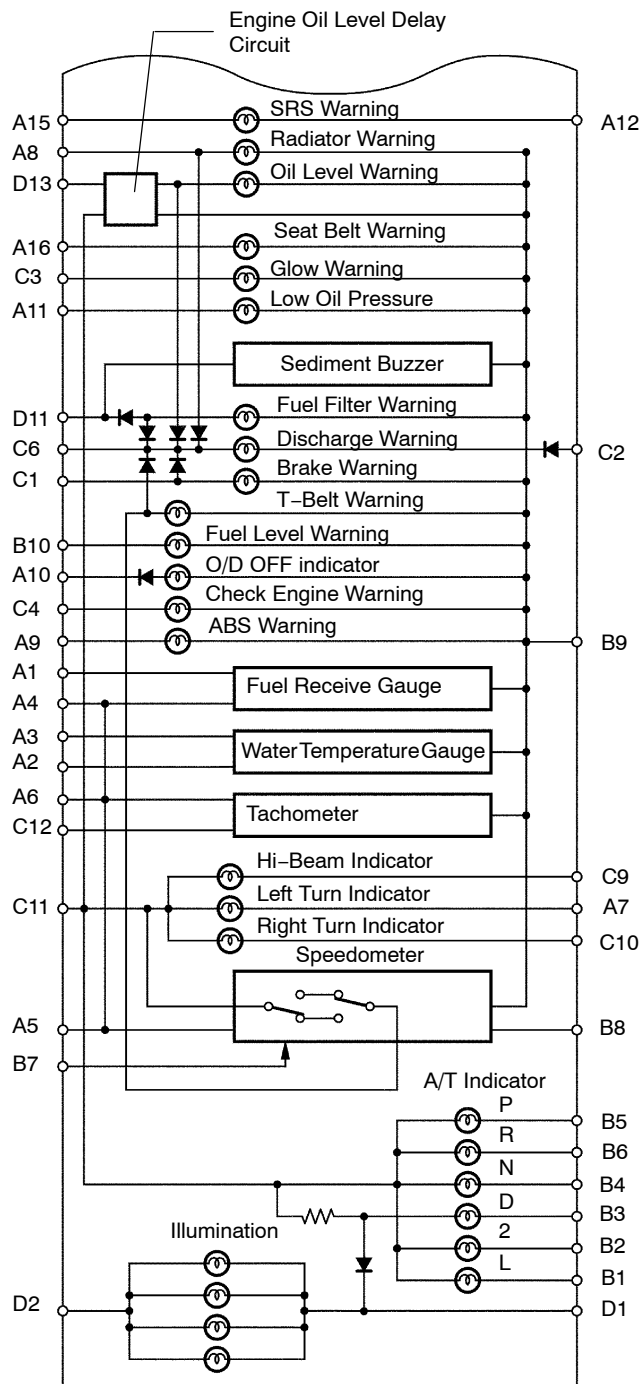
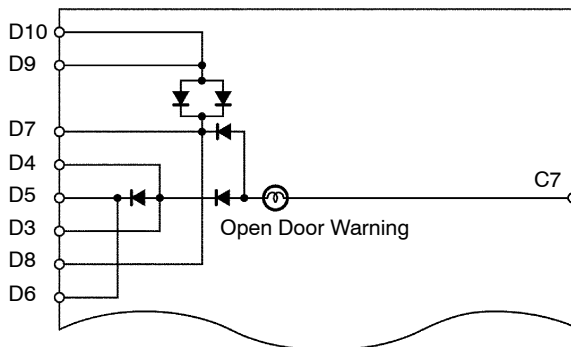
*6: Gasoline Engine *7: Diesel Engine *8: EFI Engine

w/ Tachometer:

w/o Open door warning:



w/ Open door warning:



I24406

No.	Wiring Connector Side	No.	Wiring Connector Side
A	1 Fuel Sender Gauge	C	1 Brake Fluid Level Warning Switch
	2 Water Temperature Sender Gauge		Parking Brake Switch
	3 Ground (Engine)		Vacuum Switch*7
	4 Ground (Gauge)		2 IGN Fuse
	5 Vehicle Speed Sensor		3 Pre-Heating Timer*1
	6 Pick-up sensor*1		Emission ECU*4
	7 Turn Signal Switch (Left)		Engine ECU*5
	8 Radiator Fluid Level Sensor		4 Engine (and ECT) ECU*8
	9 ABS ECU		Engine ECU*5
	10 O/D OFF Switch*2		6 Alternator L Terminal
	11 Low Oil Pressure Warning Switch		7 DOME Fuse
	12 ECU-B Fuse		9 Headlight Dimmer Switch
	15 Airbag Sensor Assembly		10 Turn Signal Switch (Right)
	16 Seat Belt Buckle Switch		11 Ground
B	1 Neutral Start Switch (L) *3	D	12 IIA *6
	2 Neutral Start Switch (2) *3		Pick-up Sensor*1
	3 Neutral Start Switch (D) *3		Emission ECU*4
	4 Neutral Start Switch (N) *3		Engine ECU*5
	5 Neutral Start Switch (P) *3		1 TAIL Fuse
	6 Neutral Start Switch (R) *3		2 Illumination Ground
	7 Vehicle Speed Sensor		3 Front Interior Light
	8 O/D ECU *2		4 Door Courtesy Switch
	Emission ECU*4		(Passenger Side)
	Engine (and ECT) ECU*5, *6		5 Door Courtesy Switch (Driver Side)
	9 Gauge Fuse		6 Light Reminder Relay
	10 Fuel Sender Gauge		7 Door Courtesy Switch (Back Door)
			8 Door Courtesy Switch (Slide Door)
			9 Room Light Switch
			10 Rear Interior Light Switch
			11 Fuel Filter Warning Switch*7
			13 Engine Oil Level Switch

*1: 2L, 3L Engine *2: 2RZ-E Engine *3: A/T Vehicle *4: 5L Engine *5: 5L-E Engine

*6: Gasoline Engine *7: Diesel Engine *8: EFI Engine